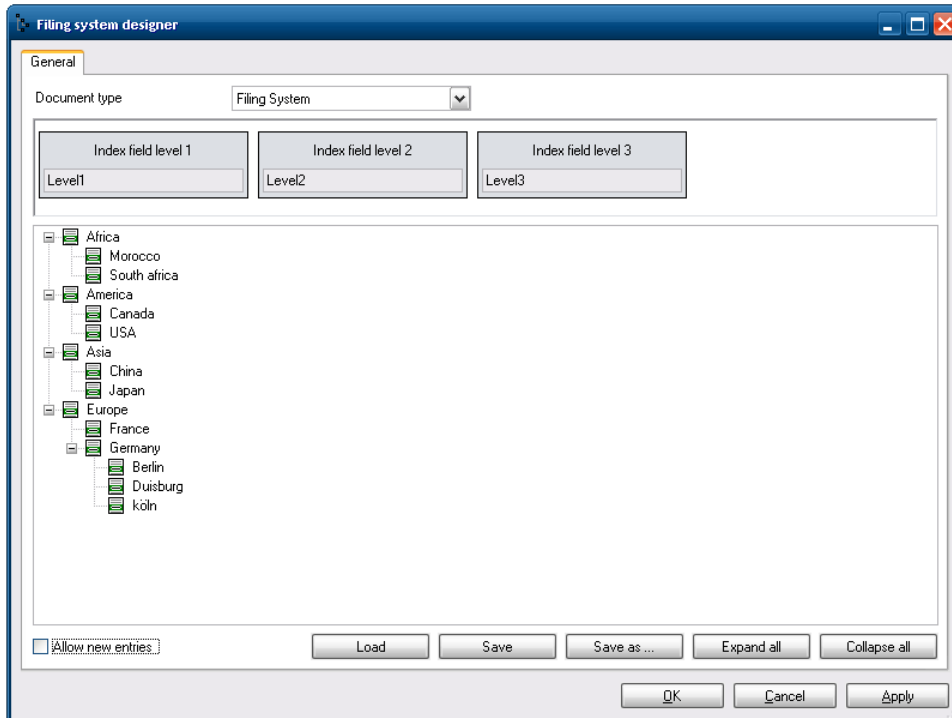


FileDirector Version 2.5 — Novelties

Filing system designer

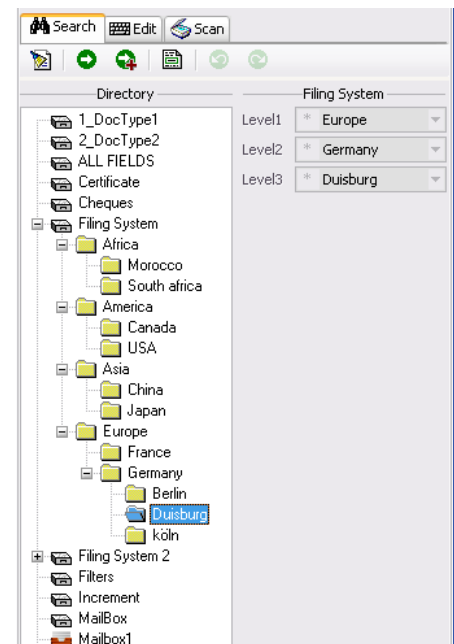
FileDirector offers an easy way to design the filing system in WinClient. The filing system provides an Explorer-like structure in WinClient. The tool is the “Filing system designer”.



Filing system in WinClient

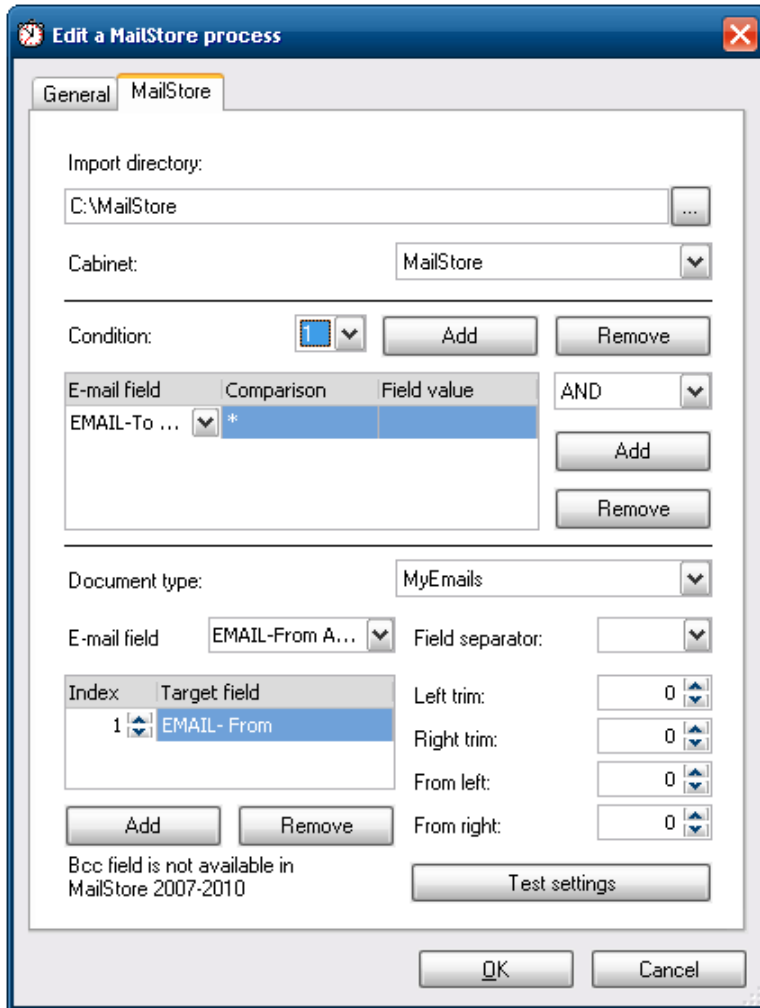
The settings done in this designer are shown in WinClient as soon as you open a document type which is set up for this filing system view.

Therefore it is possible to mix the standard view and the filing system view in one cabinet.



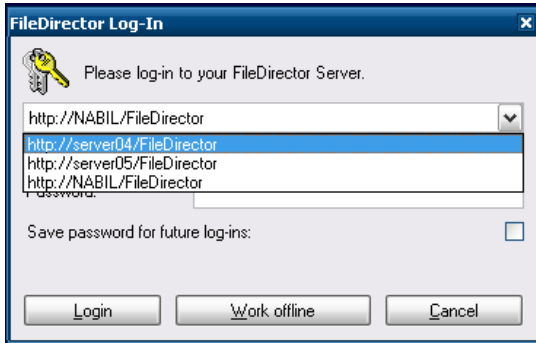
MailStore for Exchange 2007/2010

E-mails are archived after the spam filter.
With this release, the internal e-mails are also archived.



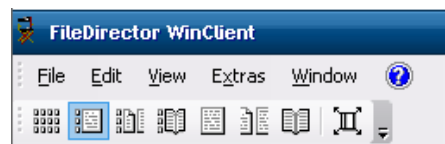
WinClient

Option „Choose connection“ has been added to the Log-in window.



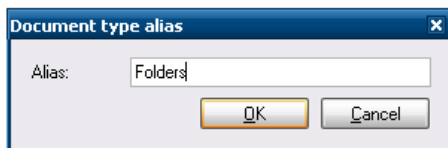
New display modes

Four new display modes have been added. The book view and the book view with thumbnails simulate turning pages of a book. The duplex view and the duplex view with thumbnails show following pages.



Document types and alias

It is possible to define an alias name for the description “document types”.

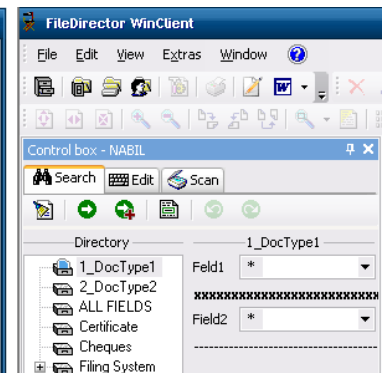
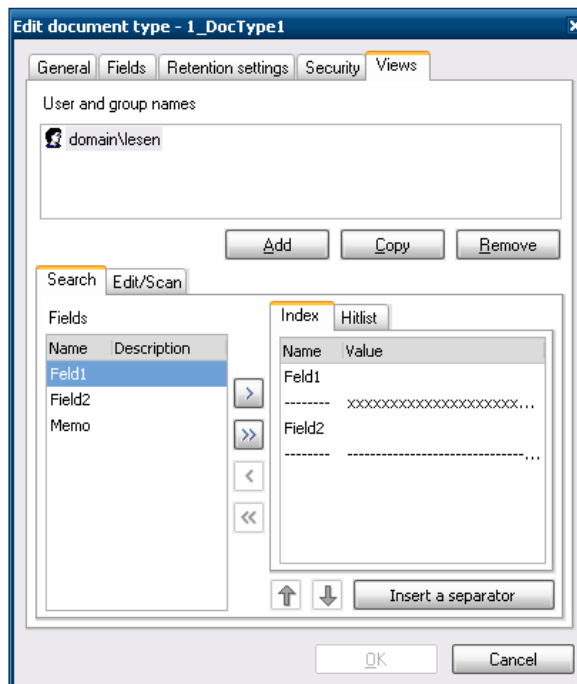


Views on document type

On the “Views” tab it is possible to define individual settings for users and groups for the fields in the control box and the hitlist in WinClient for a document type.

These settings can be defined for the tabs “Search” and “Edit/ Scan” separately.

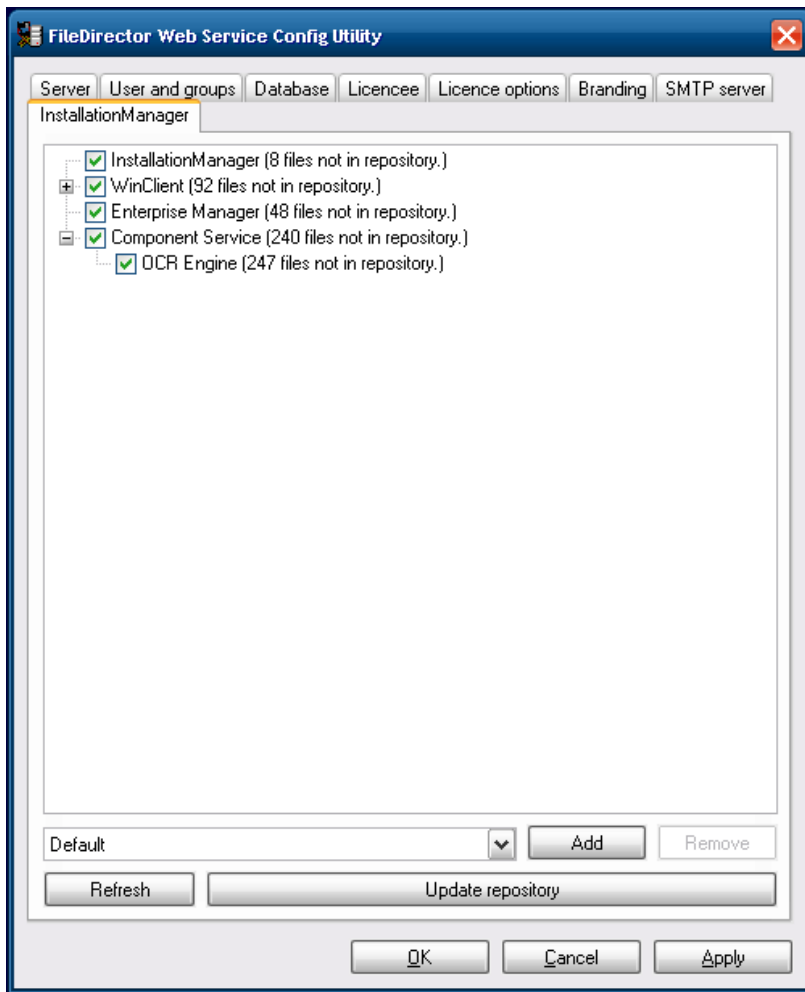
Additionally, the views for shown index fields of the control box and the hit list can be setup individually.



Installation Manager

The Installation Manager provides an easy way for rolling out the different components of FileDirector and to ensure that the components installed on the clients are the latest.

By creating several different profiles, the installation Manager offers the opportunity to adopt the role-out to different environments. This ensures that on each workstation only the necessary parts are installed.



Built-in users and Domains:

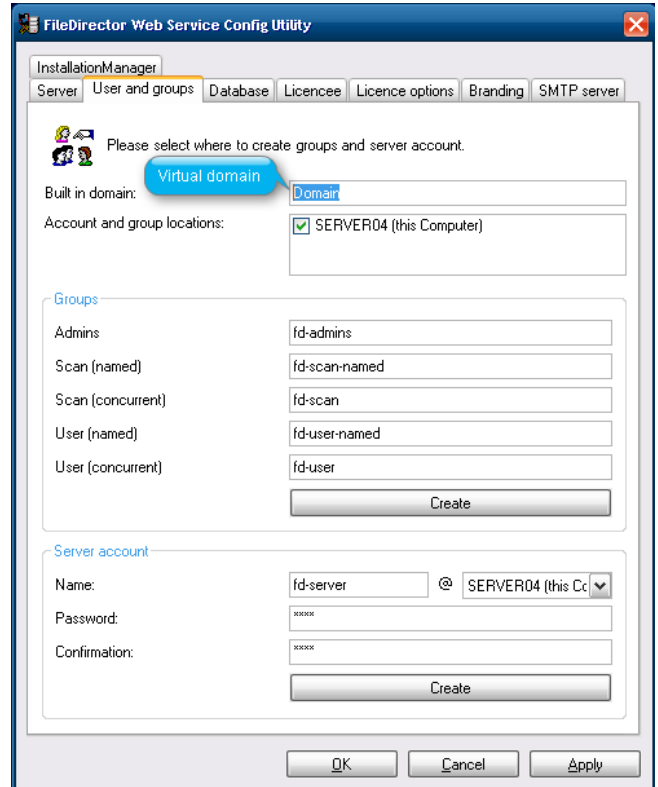
Virtual domain

Here the built in domain is defined. Multiple domains have to be separated by a “,”.

FileDirector internal user

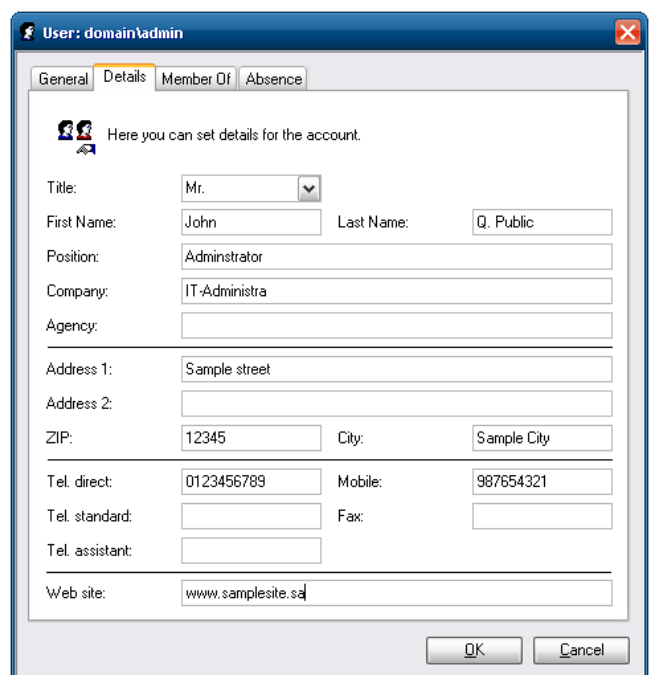
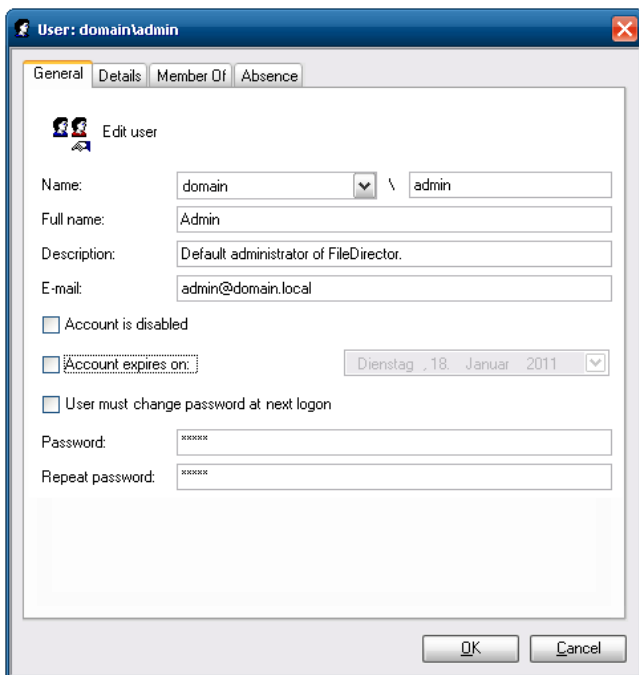
New in FileDirector 2.5 is the option of a FileDirector-internal user administration. This administration is independent from the Windows user administration.

The FileDirector user provides a similar functionality similar to using Microsoft Windows. Accounts could be created time-limited, users can be asked to change predefined password on first log-on and account can be disabled.




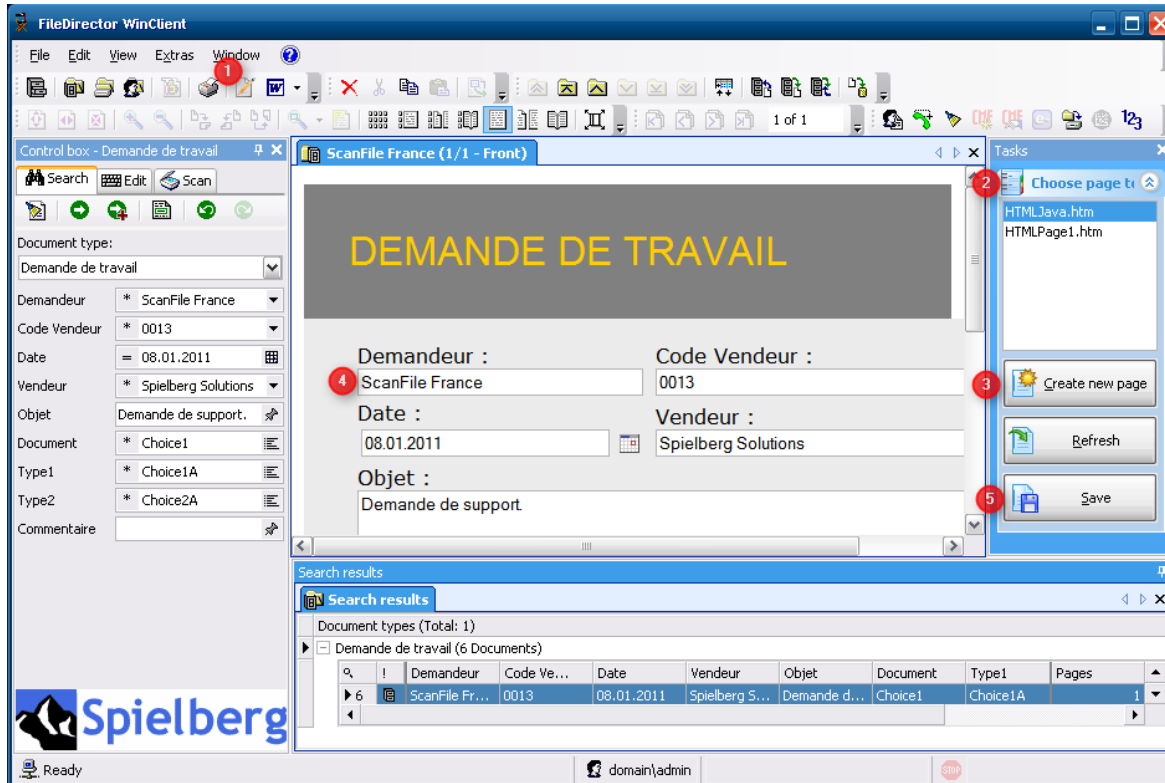
The setup of the FileDirector accounts is done through the „users and groups“ node in Enterprise Manager.

Additional information such as title, position or telephone can be entered.



Overlays in WinClient

1. Click on the button  „Create page from template“
2. A task control field appears to the left, then choose HTML from your template.
3. Click: “Create a new page“
4. The original is displayed in the viewer. > Type the index fields in the HTML page.
5. A new document is created when you click on “Save“.



Notification E-mails for documents in personal Folder

